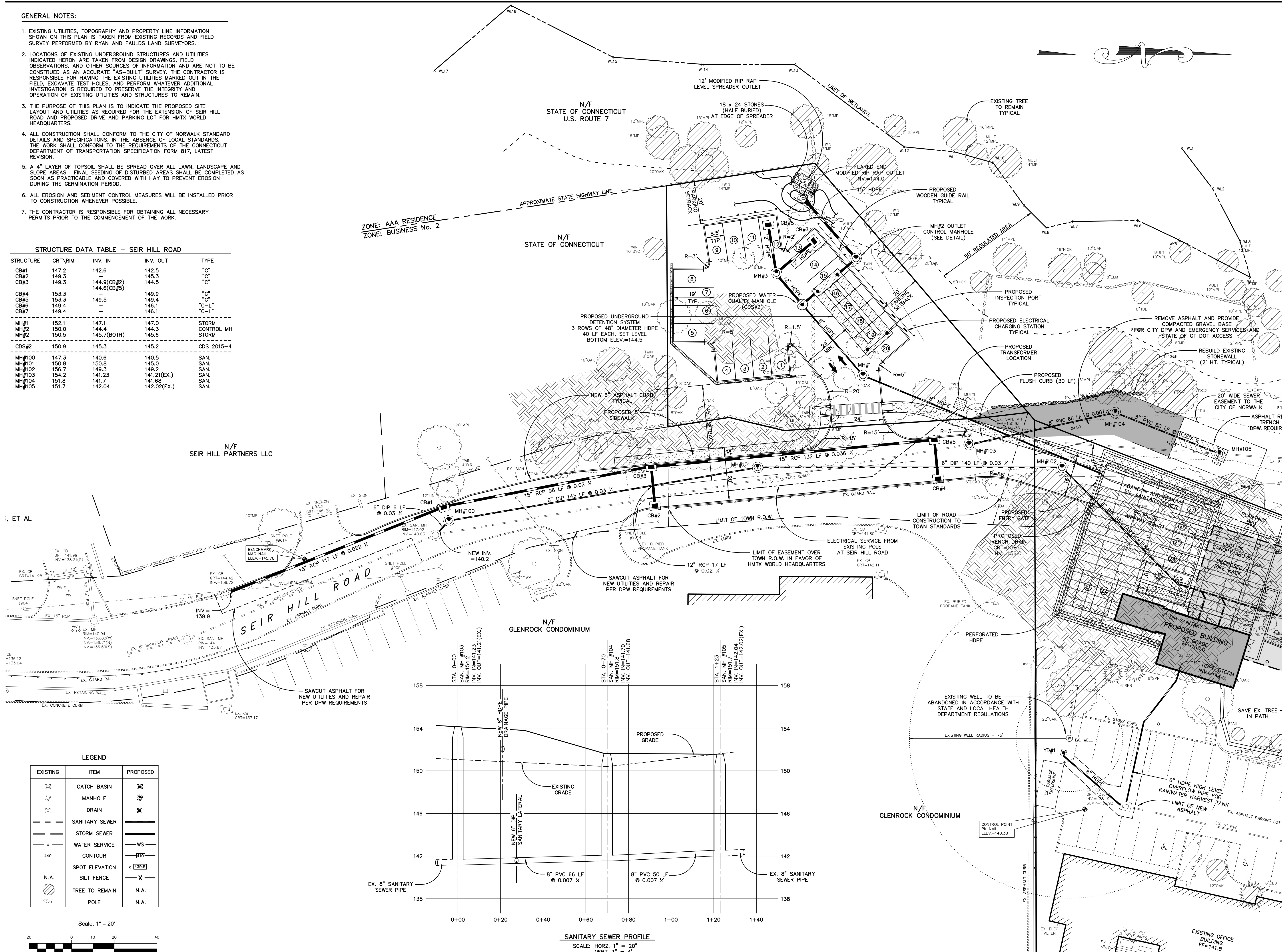


GENERAL NOTES:

- EXISTING UTILITIES, TOPOGRAPHY AND PROPERTY LINE INFORMATION SHOWN ON THIS PLAN IS TAKEN FROM EXISTING RECORDS AND FIELD SURVEY PERFORMED BY RYAN AND FAULDS LAND SURVEYORS.
- LOCATIONS OF EXISTING UNDERGROUND STRUCTURES AND UTILITIES INDICATED HEREON ARE TAKEN FROM DESIGN DRAWINGS, FIELD OBSERVATIONS, AND OTHER SOURCES OF INFORMATION AND ARE NOT TO BE CONSTRUED AS AN ACCURATE "AS-BUILT" SURVEY. THE CONTRACTOR IS RESPONSIBLE FOR HAVING THE EXISTING UTILITIES MARKED OUT IN THE FIELD, EXCAVATE TEST HOLES, AND PERFORM WHATEVER ADDITIONAL INVESTIGATION IS REQUIRED TO PRESERVE THE INTEGRITY AND OPERATION OF EXISTING UTILITIES AND STRUCTURES TO REMAIN.
- THE PURPOSE OF THIS PLAN IS TO INDICATE THE PROPOSED SITE LAYOUT AND UTILITIES AS REQUIRED FOR THE EXTENSION OF SEIR HILL ROAD AND PROPOSED DRIVE AND PARKING LOT FOR HMTX WORLD HEADQUARTERS.
- ALL CONSTRUCTION SHALL CONFORM TO THE CITY OF NORWALK STANDARD DETAILS AND SPECIFICATIONS. IN THE ABSENCE OF LOCAL STANDARDS, THE WORK SHALL CONFORM TO THE REQUIREMENTS OF THE CONNECTICUT DEPARTMENT OF TRANSPORTATION SPECIFICATION FORM 817, LATEST REVISION.
- A 4" LAYER OF TOPSOIL SHALL BE SPREAD OVER ALL LAWN, LANDSCAPE AND SLOPE AREAS. FINAL SEEDING OF DISTURBED AREAS SHALL BE COMPLETED AS SOON AS PRACTICABLE AND COVERED WITH HAY TO PREVENT EROSION DURING THE GERMINATION PERIOD.
- ALL EROSION AND SEDIMENT CONTROL MEASURES WILL BE INSTALLED PRIOR TO CONSTRUCTION WHENEVER POSSIBLE.
- THE CONTRACTOR IS RESPONSIBLE FOR OBTAINING ALL NECESSARY PERMITS PRIOR TO THE COMMENCEMENT OF THE WORK.

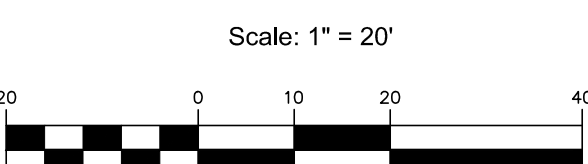
STRUCTURE DATA TABLE - SEIR HILL ROAD

STRUCTURE	GRT/RIM	INV. IN	INV. OUT	TYPE
CB#1	147.2	142.6	142.5	"C"
CB#2	149.3	143.3	145.3	"C"
CB#3	149.3	144.3(CB#2)	144.5	"C"
CB#4	153.3	-	149.9	"C"
CB#5	153.3	149.5	149.4	"C"
CB#6	149.4	146.1	146.1	"C-L"
CB#7	149.4	-	146.1	"C-L"
MH#1	152.1	147.1	147.0	STORM
MH#2	150.0	144.4	144.3	CONTROL MH
MH#2	150.5	145.7(BOTH)	145.6	STORM
CDS#2	150.9	145.3	145.2	CDS 2015-4
MH#100	147.3	140.6	140.5	SAN.
MH#101	150.8	150.8	145.0	SAN.
MH#102	156.7	149.2	149.2	SAN.
MH#103	154.2	141.23	141.21(EX.)	SAN.
MH#104	151.8	141.7	141.68	SAN.
MH#105	151.7	142.04	142.02(EX.)	SAN.



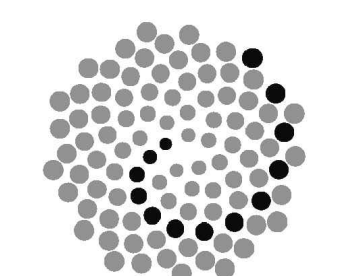
LEGEND

EXISTING	ITEM	PROPOSED
[Symbol]	CATCH BASIN	[Symbol]
[Symbol]	MANHOLE	[Symbol]
[Symbol]	DRAIN	[Symbol]
[Symbol]	SANITARY SEWER	[Symbol]
[Symbol]	STORM SEWER	[Symbol]
[Symbol]	WATER SERVICE	[Symbol]
[Symbol]	CONTOUR	[Symbol]
[Symbol]	SPOT ELEVATION	[Symbol]
[Symbol]	SILT FENCE	[Symbol]
[Symbol]	TREE TO REMAIN	[Symbol]
[Symbol]	POLE	[Symbol]

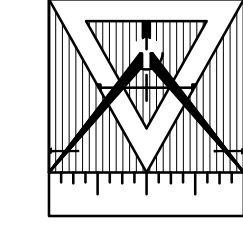


HMTX World Headquarters

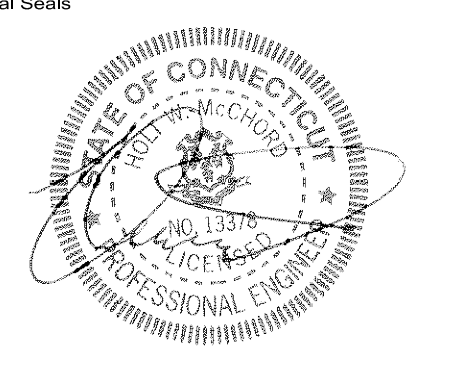
Stone Realty & Associates, LLC  
15 Oakwood Avenue  
Norwalk, CT 06850



McLennan Design, LLC  
175 Parritt Way SW, Suite N160  
Bainbridge Island, WA 98101  
t 206 219 3777



McChord Engineering Associates, Inc.  
1 Grumman Hill Road  
Wilton, CT 06897  
t 203 834 0569



No.	Issue Description	YYYY-MM-DD
1	ISSUED TO P&Z	2018-01-11
2	REMOVED FUTURE SEIR HILL ROAD CONNECTION	2018-01-18
3	REVISED AND ISSUED TO P&Z	2018-01-25
4	REVISED AND ISSUED TO P&Z	2018-02-16
5	REVISED AND ISSUED TO P&Z	2018-03-07
6	REVISED AND ISSUED TO P&Z	2020-06-05

No.	Revision Description	YYYY-MM-DD

Drawn by: DRS Reviewed by: HMM

Project No.: 16033

All reproduction & intellectual property rights reserved © 2015

SITE LAYOUT AND UTILITY PLAN  
OFF-SITE PARKING AREA

Original drawing is Arch D. Do not scale contents of this drawing.  
Sheet Number:

C104