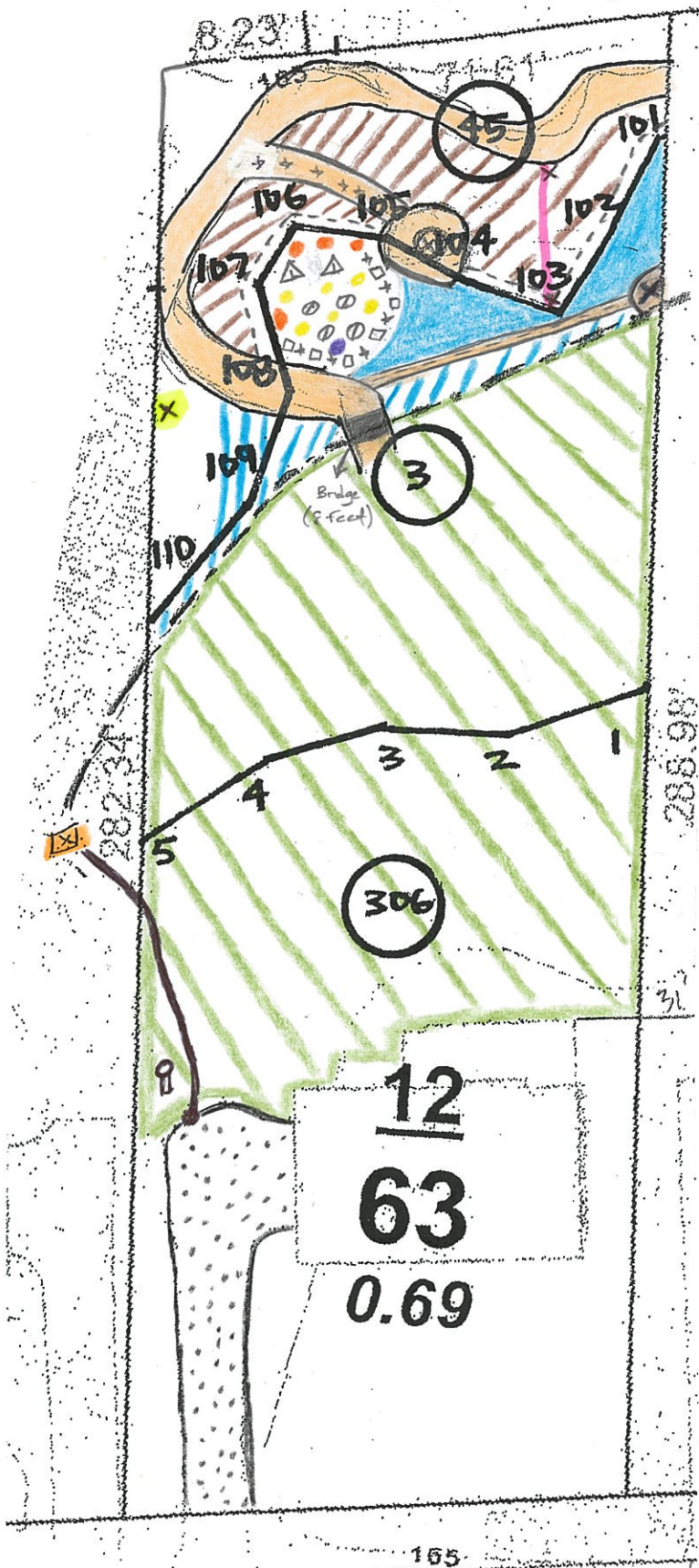


Revised Plan



LEGEND

- = Existing Lawn
- = Wood Chip Path (existing)
- = 1" Buffer zone
- = End of zipline (existing)
- = Start of zipline (existing)
- = Existing wetland vegetation
- = New wetland seed mix
- = Mulch area (existing)
- = city easement
- = Aerial Ninja slackline (existing)
- = English Boxwood (existing)
- = Catnip (existing)
- = Pin Oak Tree (existing)
- = Driveway (existing)
- = Inkberry (New) 4 plants
- = Blue Lobelia (New) 3 plants
- = Foam Flower (New) 6 plants
- = Hosta (existing)
- = Shasta Daisy (existing)
- = 18" catch basin + 4" underground PVC pipe connecting to city easement (New)

NOTES

- + Mulch will be removed from inside wetland areas between markers 101 - 104 + replaced with a wetland seed mix. Mulch will be removed in the existing garden area + native plants (Blue Lobelia, Inkberry + Foam Flower) will be added to this area between 105 - 108
- + There will be a one foot buffer zone between the designated wetland markers 101 - 108 + the existing mulched area
- + The original wood chip path that went to the fire pit will be moved so that it falls outside of the designated wetland markers between 105 + 106
- + A narrow two foot wide wood chip path will be added so that children can safely access the zipline. Currently the entire area is mulched so this will be a significant reduction
- + A filter will be installed in the driveway catch basin in order for clean water to flow into the city easement

MARKERS (Otto Theall's Sketch)

- = Wetland Soils
- = Non-Wetland Soils
- = Non-Wetland Soils
- 1-5 = wetland area starts
- 101-110 = wetland area ends